

Chapter 6
 LOWER MANTLE MINERALOGY AND
 THE GEOPHYSICAL PERSPECTIVE

Craig R. Bina

Department of Geological Sciences
 Northwestern University
 Evanston, Illinois 60208

ERRATA

Below are two additional panels, to supplement those in Figure 11 [page 230] and Figure 12 [page 231], which may be of some interest.

Page 207:

Note that panels b and c in Figure 1 have been transposed.

Page 219:

The subsection heading V_P / V_S relations should be set in bold italics rather than italics.

Page 232:

In the last paragraph of the chapter, the following sentence was garbled:

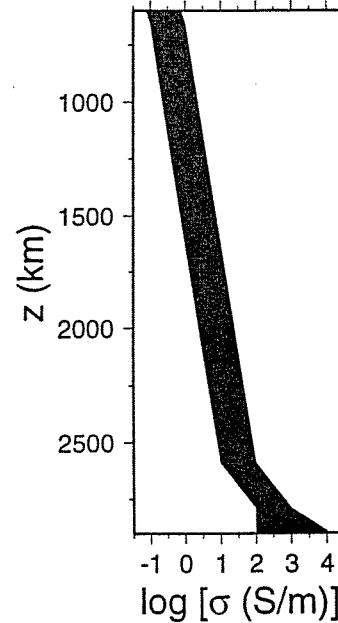
“With regard to the oxides, FeO undergoes transformation to a rhombohedral structure at pressures corresponding to ~1700 km (Mao et al. 1996), perhaps shifting to shallower depths in (Mg,Fe)O magnesiowüstite.”

The correct sentence should read as follows:

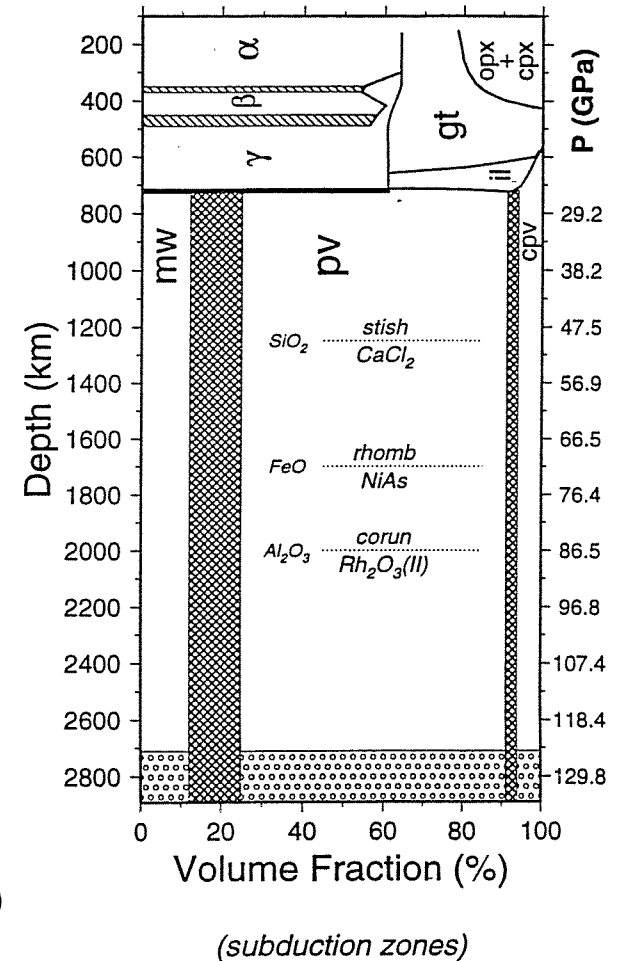
With regard to the oxides, while FeO wüstite undergoes transformation to a rhombohedral structure at upper mantle pressures (and perhaps at slightly higher pressures in some (Mg,Fe)O magnesiowüstites), it transforms to a NiAs-type structure at pressures corresponding to ~1700 km (Mao et al. 1996).

Page 231:

Similarly, the dotted line in Figure 12 labelled $\frac{wust}{rhomb}$ should actually be labelled $\frac{rhomb}{NiAs}$.



(electrical conductivity)



(subduction zones)